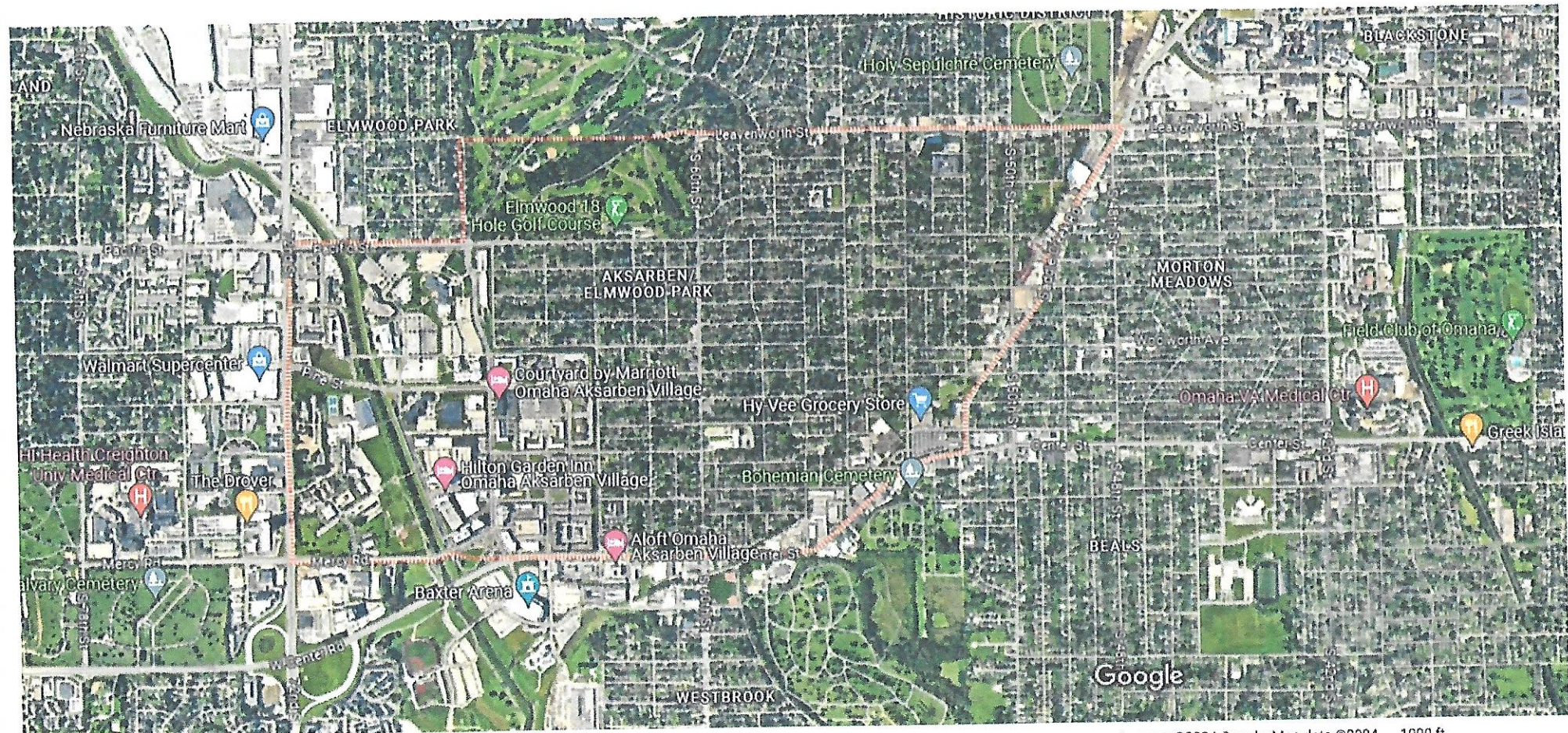




### Aksarben/Elmwood Park

The Aksarben/Elmwood Park neighborhood in Omaha, Nebraska is a historically significant area that was developed in the late 19th and early 20th century. It extends from Leavenworth Street on the north to Center Street on the south; from South 50th Street on the east to South 72nd Street on the west.



Imagery ©2024 Google, Map data ©2024 1000 ft